

sensIQ S

EVO Anthracite

EAN 4007841 056650

Article number 056650

infrared sensor 3 x
100°3 zones scalable
2-20m

2000 W

2000 W max. (LED-
ready)

IP54

2 - 2000 lux daylight
operation

5 sec - 15 min



ideal 2 - 5 m

Teach

Teach mode



energy saving

5 years

manufacturer's
warranty steinel-
professional.de/
garantie

Function description

The evolution of perfection. The sensIQ S is just as perfect as its larger role model. For indoors and outdoors, ideal for building entrances, loading bays, for mounting heights of up to 5 m, quadruple sensor system for optimum surveillance over 3x100° coverage angle, 20 m reach (tangential), reach setting to the accuracy of a metre in 3 independent directions. Remote control and corner wall mount bracket included.

Technical specifications

Dimensions (L x W x H)	128 x 114 x 74 mm	LED lamps > 2 W < 8 W	300 W
With motion detector	Yes	LED lamps > 8 W	600 W
Manufacturer's Warranty	5 years	Capacitive load in µF	176 µF
Settings via	Remote control, Potentiometers, Smart Remote	Power supply, detail	500 VA max., 120 V
With remote control	Yes	Technology, sensors	passive infrared, Light sensor
Version	Anthracite	Mounting height	2,00 – 5,00 m
PU1, EAN	4007841056650	Mounting height max.	5,00 m
Type	Motion detectors	Optimum mounting height	2 m
Application, place	Indoors, Outdoors	Detection angle	300 °
Application, room	multi-storey / underground car park, outdoors, warehouse, front door, all round the building, courtyard & driveway, Indoors	Angle of aperture	180 °
		Sneak-by guard	Yes
Colour	Anthracite	Capability of masking out individual segments	Yes
Colour, RAL	7016	Electronic scalability	No
Includes corner wall mount	Yes	Mechanical scalability	Yes
Installation site	wall, corner	Reach, radial	r = 4 m (42 m²)
		Reach, tangential	r = 20 m (1047 m²)

sensIQ S

EVO Anthracite
 EAN 4007841 056650
 Article number 056650

**Technical specifications**

Installation	Surface wiring, Wall, corner
IP-rating	IP54
Ambient temperature	-20 – 50 °C
Material	Plastic
Mains power supply	100 – 240 V / 50 – 60 Hz
Switching output 1, resistive	2000 W
Switching output 1, number of LEDs / fluorescent lamps	50 pcs.
Fluorescent lamps, electronic ballast	1500 W
Fluorescent lamps, uncorrected	1000 VA
Fluorescent lamps, series-corrected	700 VA
Fluorescent lamps, parallel-corrected	1000 VA
Switching output 1, low-voltage halogen lamps	1000 VA
LED lamps < 2 W	100 W

Switching zones	1360 switching zones
Functions	Normal / test mode, Manual ON / ON-OFF
Twilight setting	2 – 1000 lx
Time setting	5 s – 15 Min.
Basic light level function	No
Main light adjustable	No
Twilight setting TEACH	Yes
Constant-lighting control	No
Interconnection	Yes
Type of interconnection	Master/master
Interconnection via	Cable

Accessories

EAN 4007841 007638	Remote control RC9
EAN 4007841 009151	Remote control Smart Remote

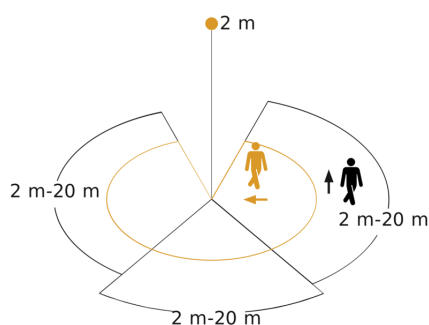
sensIQ S

EVO Anthracite

EAN 4007841 056650

Article number 056650

Detection Zone



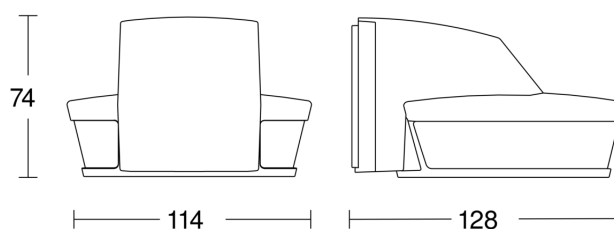
Possible mounting height: 2,00 m – 5,00 m

Orange: radial

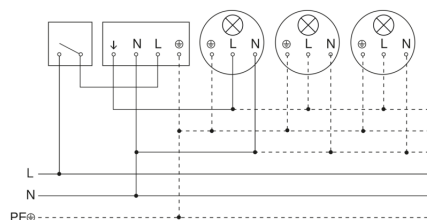
Black: tangential

3 scalable zones

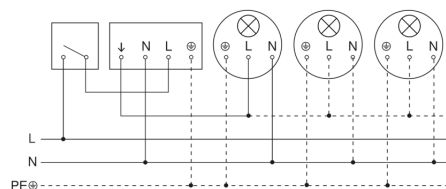
Dimension Drawing



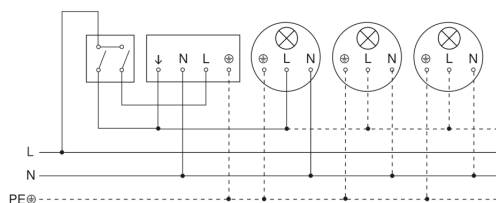
Light without neutral conductor



Light with neutral conductor



Connection using two-circuit switch for manual and automatic operation



Connection of 4-fold push-button coupler to DALI2 APC

